

XV. KIDNEY CANCER

Kidney cancer is the 9th most common cancer, and is about twice as common in males as in females. In addition to family history and genetic mutations, risk factors for kidney cancer include smoking, obesity, and high blood pressure [85-87]. In the Greater Bay Area, incidence rates of kidney cancer were highest in NH Black males and females (26.7 and 14.0 per 100,000, respectively) and lowest in Asian/Pacific Islander males and females (12.2 and 5.7 per 100,000, respectively) (**Figure 27**).

Kidney cancer rates have been increasing since 1988 at a rate of 2-3 % per year for most groups in the Greater Bay Area (**Figure 26**). The majority of kidney cancers (between 60-70%) are diagnosed before the cancer has spread outside the kidney (localized stage), and the observed incidence trends are driven by the trends in localized stage disease. Increasing rates can in part be attributed to the greater use of medical imaging procedures resulting in incidental detection of early kidney cancers. They may also reflect changes in the prevalence of kidney cancer risk factors,

such as obesity and hypertension, in the population [85].

For 2014 through 2018, kidney cancer incidence rates overall in the Greater Bay Area were similar to rates in California for all racial/ethnic groups (**Figure 27**).

Kidney cancer mortality rates are lowest among Asian/Pacific Islander males and females (3.2 and 1.2 per 100,000, respectively) and highest among NH Black males and females (5.9 and 2.7 per 100,000, respectively) during 2014-2018. Greater use of sophisticated imaging procedures, resulting in diagnosis of early stage tumors, has led to improved survival, thus reducing mortality rates nationwide [85]. Mortality due to kidney cancer in the Greater Bay Area declined by 0.8% per year for males and 1.4% per year for females from 1988 through 2018. Mortality rates in the Greater Bay Area were comparable to California rates for all racial/ethnic groups.

Figure 26: Kidney Cancer Incidence and Mortality Rates and Trends in the Greater Bay Area by Race/Ethnicity, 1988-2018

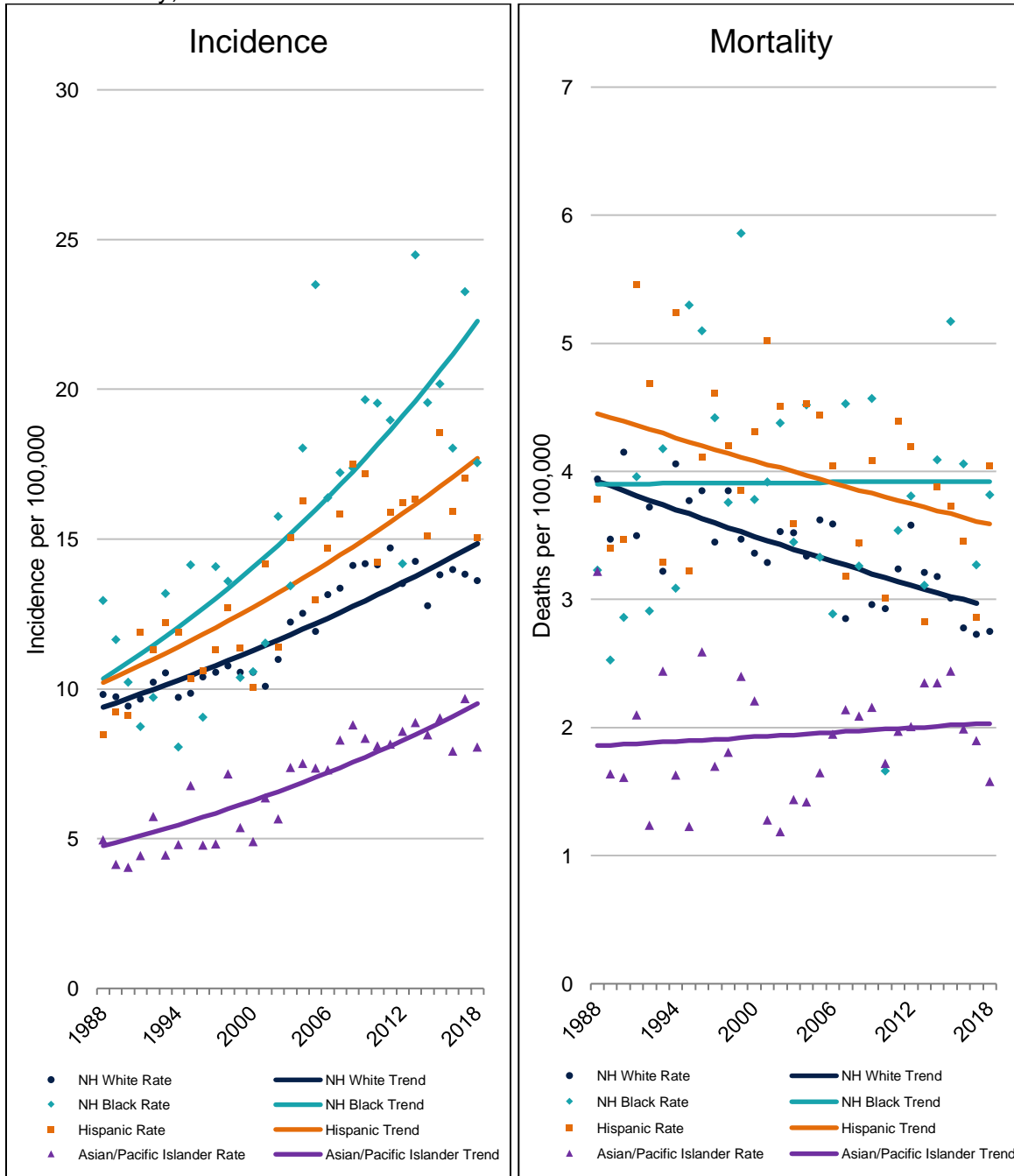
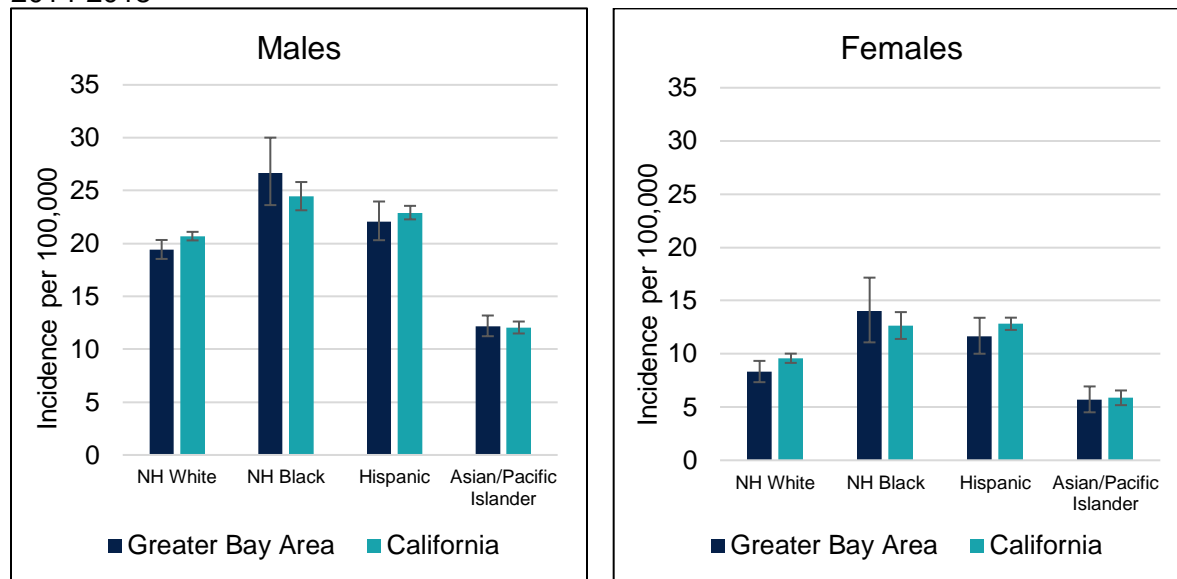


Figure 27: Kidney Cancer Age-Adjusted Incidence Rates¹ by Sex, Race/Ethnicity, and Region², 2014-2018



¹ Error bars (in Black at the top of the bars) indicate 95% confidence intervals surrounding the corresponding incidence rates.

² The two regions represented include: (1) the Greater Bay Area (nine-county region), and (2) all of California (including the nine-county Greater Bay Area region).