

# Cancer Incidence Trends among Koreans in the United States, 1990-2008\*

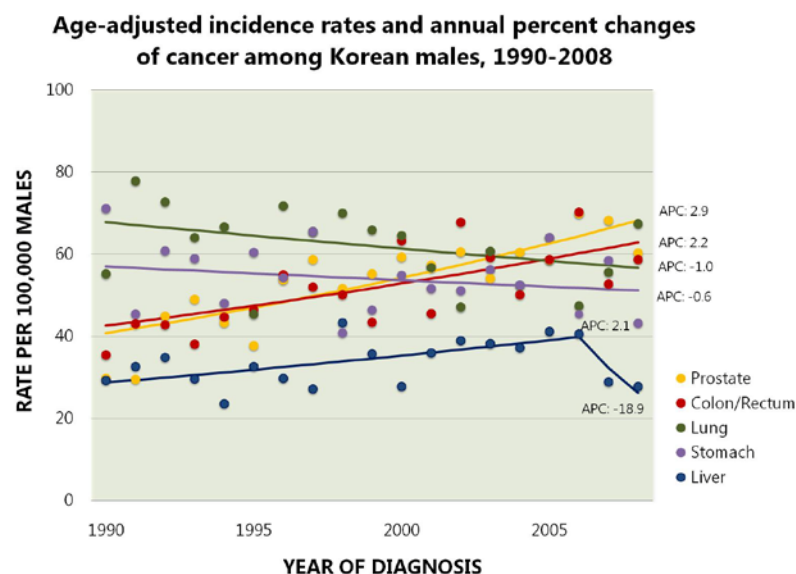


CANCER PREVENTION INSTITUTE OF CALIFORNIA

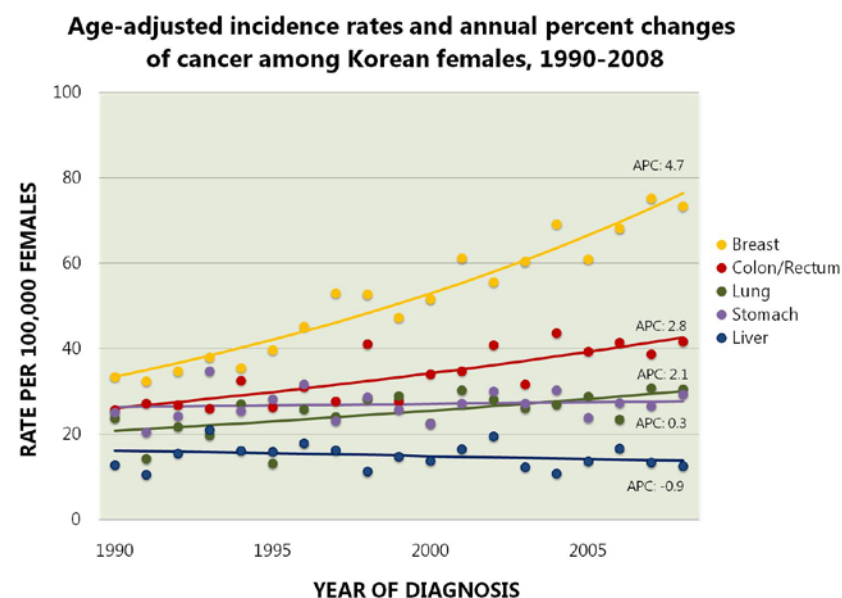
Preventing Cancer. Promoting Life.

By 2010, Korean Americans were the fourth largest Asian group in the United States, making up 10 percent of the Asian American population. They were also the fourth fastest growing Asian ethnic group in the United States, increasing by 39 percent between 2000 and 2010. The largest communities live in California, while the second and third largest groups live in southern and northeastern states. (US Census 2010) As a group, they have experienced unique changes in cancer occurrence over the nineteen year period, from 1990 to 2008.

**Korean Males.** Among this group, the five most commonly diagnosed cancers were prostate, colon/rectum, lung, stomach and liver. Between 1990 and 2008, Korean males experienced dramatic increases in both cancers of the prostate and colon/rectum, with rates increasing by 2.9 and 2.2 percent each year. In contrast, lung cancer decreased each year by 1.0 percent while stomach cancer remained stable. Liver cancer diagnoses increased steadily by 2.1 percent each year, and plunged dramatically by 18.9 percent in 2006 onward.



**Korean Females.** Among Korean females, the five most commonly diagnosed cancers were the breast, colon/rectum, lung, stomach and liver. From 1990 to 2008, breast cancer rates rose by 4.7 percent each year, remaining the most common cancer diagnosis. Cancers of the colon/rectum and lung increased annually by 2.8 percent and 2.1 percent, respectively, while stomach cancer remained stable. Liver cancer, the fifth most commonly diagnosed cancer in this group, declined by 0.9 percent each year.



## Prevention and Early Detection

The risk of many of these cancers can be reduced through healthy lifestyle modifications, early detection and vaccinations. More information on cancer prevention and early detection can be found in the following resources:

- The National Cancer Institute: [Cancer Prevention](#)
- The Centers for Disease Control and Prevention: [breast cancer screening](#); [colon/rectum cancer screening](#); [liver cancer vaccination](#); [lung cancer screening](#) and [prostate cancer screening](#).

**Note:** The incidence rates for this report were calculated based on data from the Surveillance, Epidemiology, and End Result (SEER) Program of the National Cancer Institute (NCI) and the 1990 and 2000 U.S. Census. The rates are based on geographic regions that cover 45% of the U.S. Korean population, and they are adjusted to the 2000 U.S. population standard.

\*This fact sheet is based on findings from the Journal of the National Cancer Institute 2013 publication "Cancer incidence trends among Asian American populations in the United States, 1990-2008." For access to the original scientific publication, please see our website [www.cpic.org](http://www.cpic.org) or email us at [data.release@cpic.org](mailto:data.release@cpic.org).